

# Anti-Beta Actin Antibody

Cat No: Kab00869

---

## Product Information:

Size:	100µg
Form:	liquid
Purification:	Immunogen affinity purified
Purity:	≥95% as determined by SDS-PAGE
Host:	Rabbit
Clonality:	polyclonal
IsoType:	IgG
Storage:	PBS with 0.02% sodium azide and 50% glycerol pH 7.3, -20°C for 12 months (Avoid repeated freeze / thaw cycles.)

## Background:

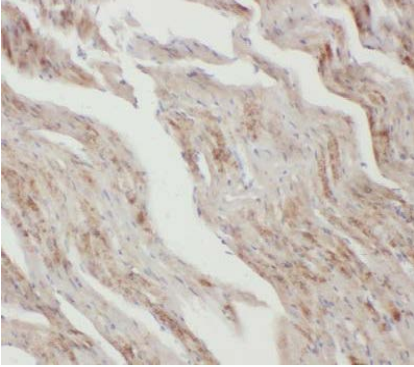
Beta actin, also named as ACTB and F-Actin, belongs to the actin family. Actins are highly conserved globular proteins that are involved in various types of cell motility and are ubiquitously expressed in all eukaryotic cells. At least six isoforms of actins are known in mammals and other vertebrates: alpha (ACTC1, cardiac muscle 1), alpha 1 (ACTA1, skeletal muscle), and 2 (ACTA2, aortic smooth muscle), beta (ACTB), gamma 1 (ACTG1) and 2 (ACTG2, enteric smooth muscle). Beta and gamma 1 are two non-muscle actin proteins. Most actins consist of 376aa, while ACTG2 (rich in muscles) has 375aa and ACTG1 (found in non-muscle cells) has only 374aa. Beta actin has been widely used as the internal control in RT-PCR and Western Blotting as a 42-kDa protein. However, the 41 kDa cleaved fragment of beta actin can be generated during apoptosis process. This antibody was generated against N-Terminal region of human beta protein and can cross-react with other actins.

## Immunogen information

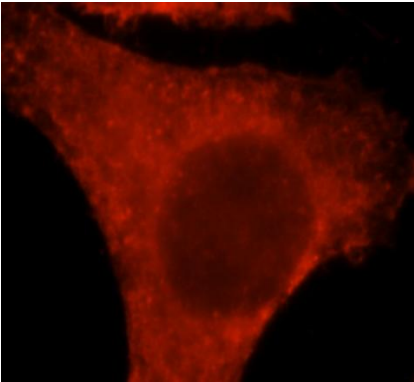
Immunogen:	actin, beta
Synonyms:	ACTB, Actin, actin, beta, Actin, cytoplasmic 1, B actin, Beta actin, F actin, β actin
Observed MW:	42 kDa
Uniprot ID:	P60709

## Application

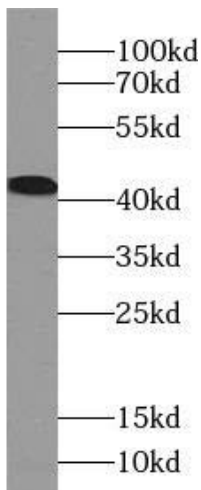
Reactivity:	Human, Mouse, Rat
Tested Application:	ELISA, IF, WB, IHC, IP
Recommended dilution:	WB: 1:500-1:2000; IHC: 1:20-1:500; IF: 1:10-1:100

**Image:**

Immunohistochemistry of paraffin-embedded human heart using Kab00869 (ACTB antibody) at dilution of 1:100



Immunofluorescent analysis of HepG2 cells, using ACTB antibody Kab00869 at 1:25 dilution and Rhodamine-labeled goat anti-rabbit IgG (red). (ACTB antibody) at dilution of 1:100



C6 cells were subjected to SDS PAGE followed by Western blot with Kab00869 (beta actin Antibody) at dilution of 1:2000.

**Note: This product is for research use only, not for diagnostic or therapeutic use.**